



IN COLLABORATION WITH



MARS[®] MAG PREMIUM LINE

MARS[®] MAG Premium Line is a family of cell separation reagent kits launched in collaboration with STEMCELL Technologies. These reagents have been shown to enable fast and easy isolation of many cell types, including granulocytes, NK cells, and plasma cells.

With protocols optimized for the MARS instruments, the kits provide an integrated cell isolation solution. This is especially applicable to areas of immunophenotyping, tumor biology, cell therapy.

Magnetic cell separation is one of the most effective methods to isolate highly purified specific cells of interest. Compared to some solutions that require complex protocols or result in low cell purity and/or recovery, MARS[®] platforms avoid these shortcomings to deliver a fast, automated, gentle and efficient cell isolation.

EASY POSITIVE SELECTION WORKFLOW

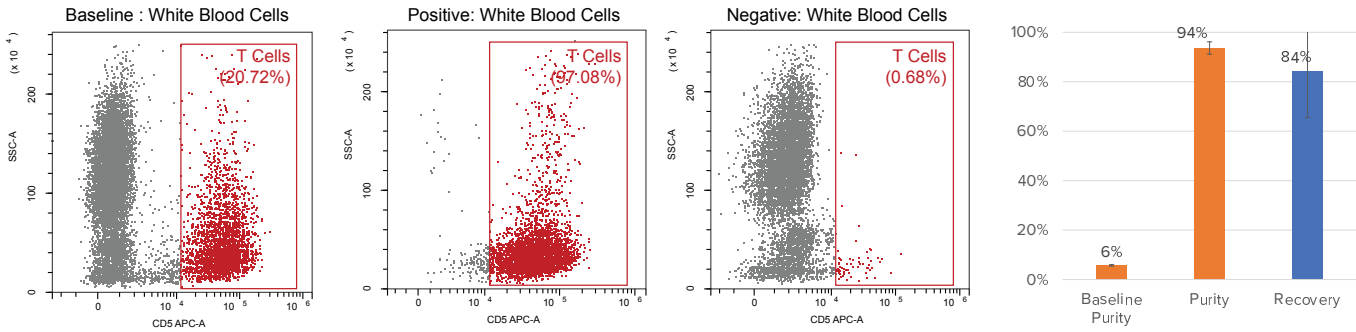
The simple ADD-ADD-RUN protocol is exquisitely easy. Isolating cells with the MARS[®] MAG Premium Line uniquely allows for a no-lyse, no-wash protocol, greatly accelerating the isolation speed and providing gentle sample treatment.

FAST NEGATIVE CELL ISOLATION

We support immunomagnetic cell separation for a gentle and fast negative cell isolation.

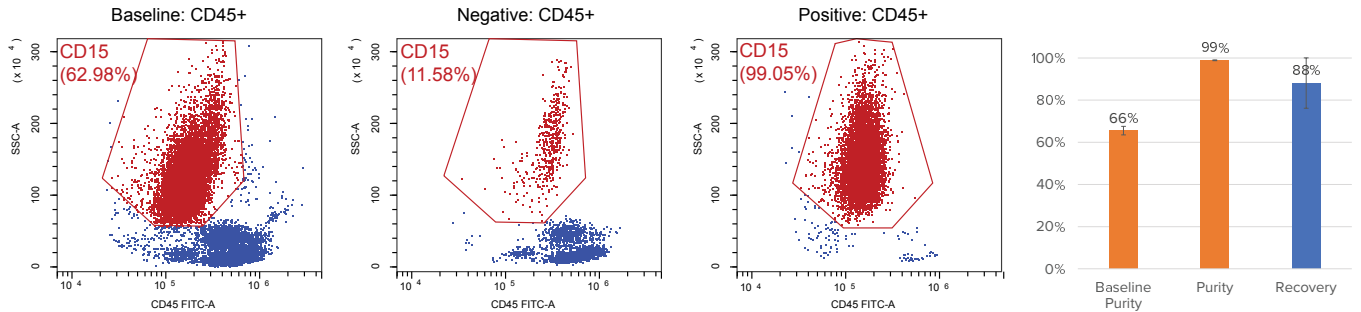


Human CD3+ Positive Selection Kit CAT NO: R_MP006



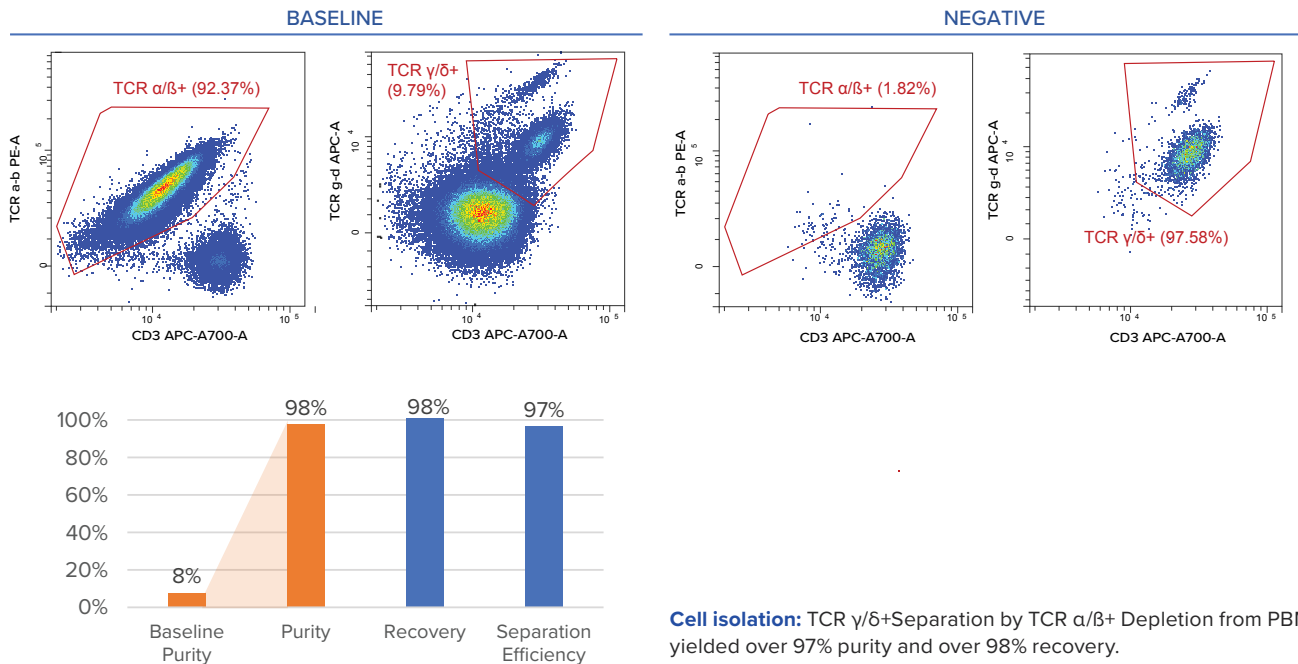
Cell isolation: CD3+ cell isolation with from Whole Blood with No Lyse Magnetic Selection yielded over 94% purity and over 84% recovery.

Human CD15+ Positive Selection Kit CAT NO: R_MP003



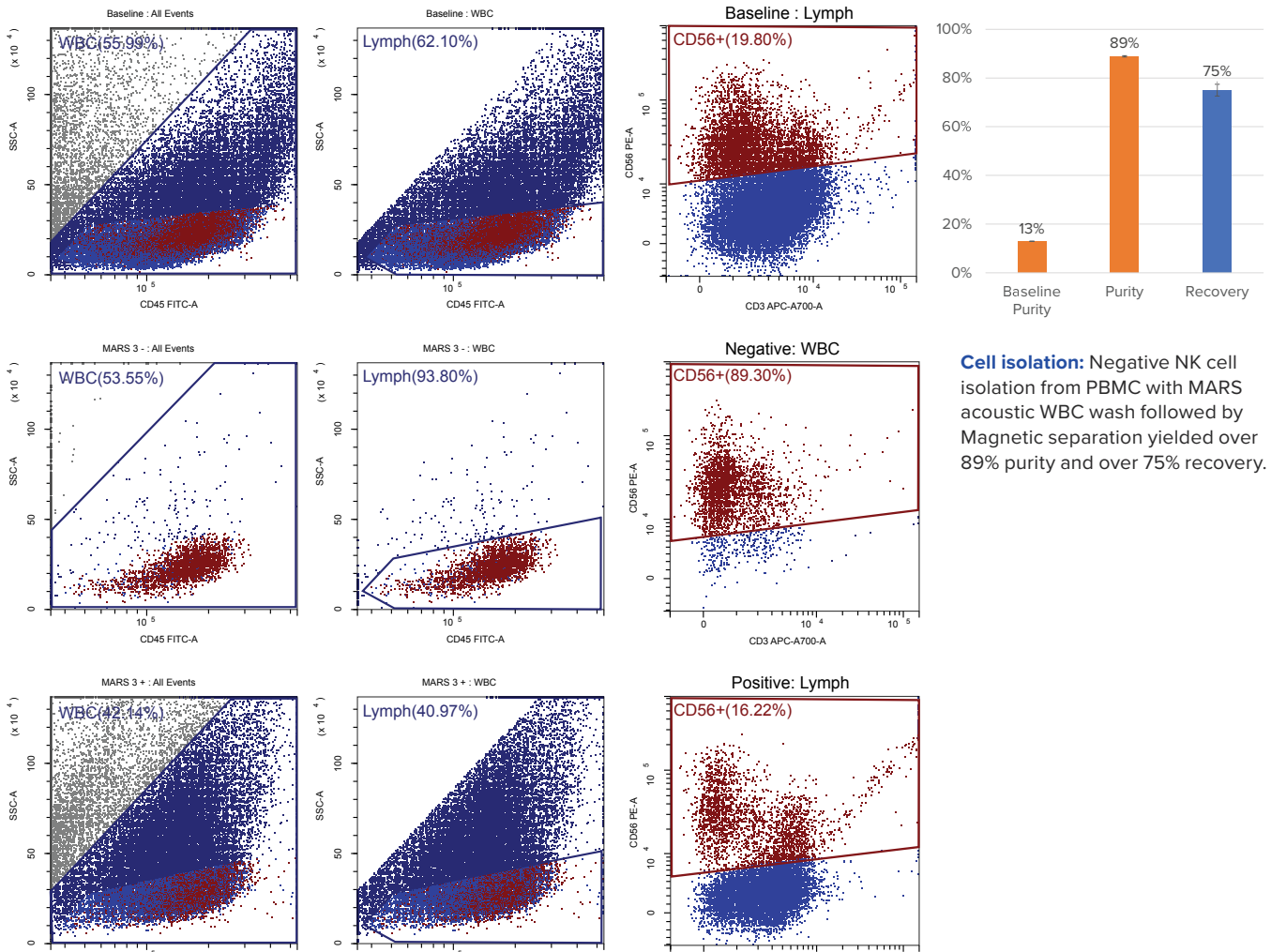
Cell isolation: CD15+ cell isolation with from Whole Blood with No Lyse Magnetic Selection yielded over 99% purity and over 88% recovery.

Human TCR α/β+ Depletion Kit CAT NO: R_MP007



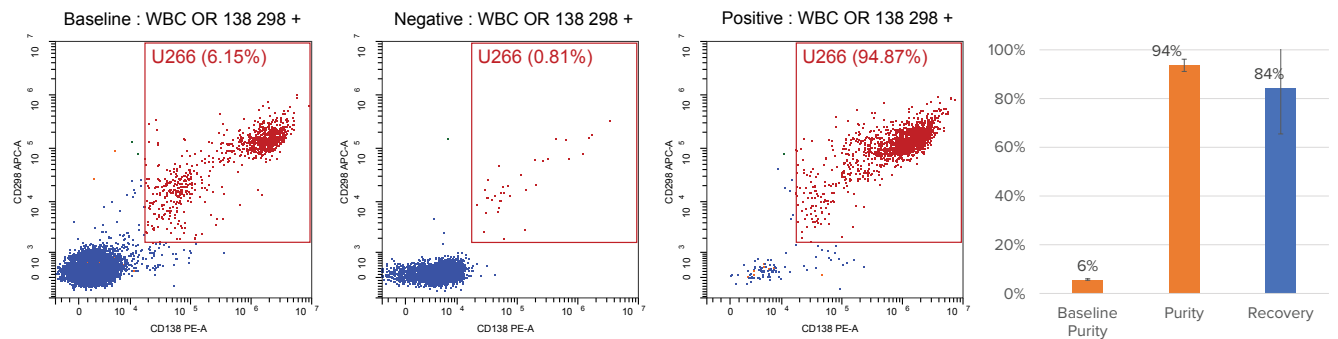
Cell isolation: TCR γ/δ+ Separation by TCR α/β+ Depletion from PBMC yielded over 97% purity and over 98% recovery.

Human NK Negative Selection Kit CAT NO: R_MP004



Cell isolation: Negative NK cell isolation from PBMC with MARS acoustic WBC wash followed by Magnetic separation yielded over 89% purity and over 75% recovery.

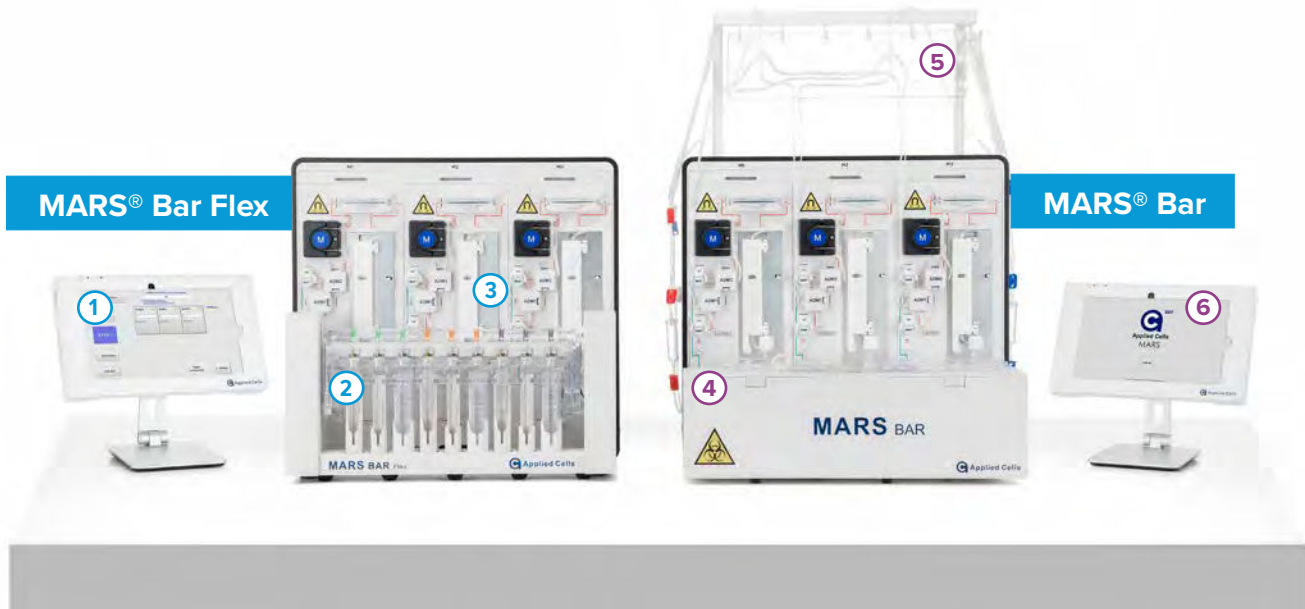
Human CD138+ Positive Selection Kit CAT NO: R_MP005



Cell isolation: CD138+ cell isolation from Whole Blood spiked in with 6% of U266 cell line with No Lyse Magnetic Selection yielded over 94% purity and over 84% recovery.

MARS® PLATFORM ENABLES EASY ASSAY OPTIMIZATION AND UPSCALING

- ① Pre-programmed and customizable workflows for easy optimization
- ④ Capacity to process billions of cells in a single closed system operation
- ② Parallel processing of up to 3 samples
- ⑤ Bags compatible holding arm
- ③ Matrix-free magnetic column sample flow rate of 1 mL/min
- ⑥ Control panel operated from a distance for use in bio-safety hood



CHOOSE YOUR MARS® MAG PREMIUM LINE KIT

If you need a large quantity of MARS® MAG Premium Line reagents, contact your sales rep for special discounted pricing.

KIT	CAT. NO.
Human CD3+ Positive Selection Kit	R_MP006
Human CD15+ Positive Selection Kit	R_MP003
Human TCR Alpha/Beta Depletion Kit	R_MP007
Human NK Negative Selection Kit	R_MP004
Human CD138+ Positive Selection Kit	R_MP005

For research use only. Not for use in therapeutic or diagnostic procedures.

© Copyright 2023. All rights reserved. Applied Cells and MARS are registered trademarks of Applied Cells, Inc. All other trademarks are the property of their respective owners. STEMCELL Technologies & Design, STEMCELL Shield Design, and Scientists Helping Scientists are trademarks of STEMCELL Technologies Canada Inc. PRODUCTS ARE FOR RESEARCH USE ONLY AND NOT INTENDED FOR HUMAN OR ANIMAL DIAGNOSTIC OR THERAPEUTIC USES UNLESS OTHERWISE STATED. FOR ADDITIONAL INFORMATION ON QUALITY AT STEMCELL, REFER TO WWW.STEMCELL.COM/COMPLIANCE.

AC_B006B